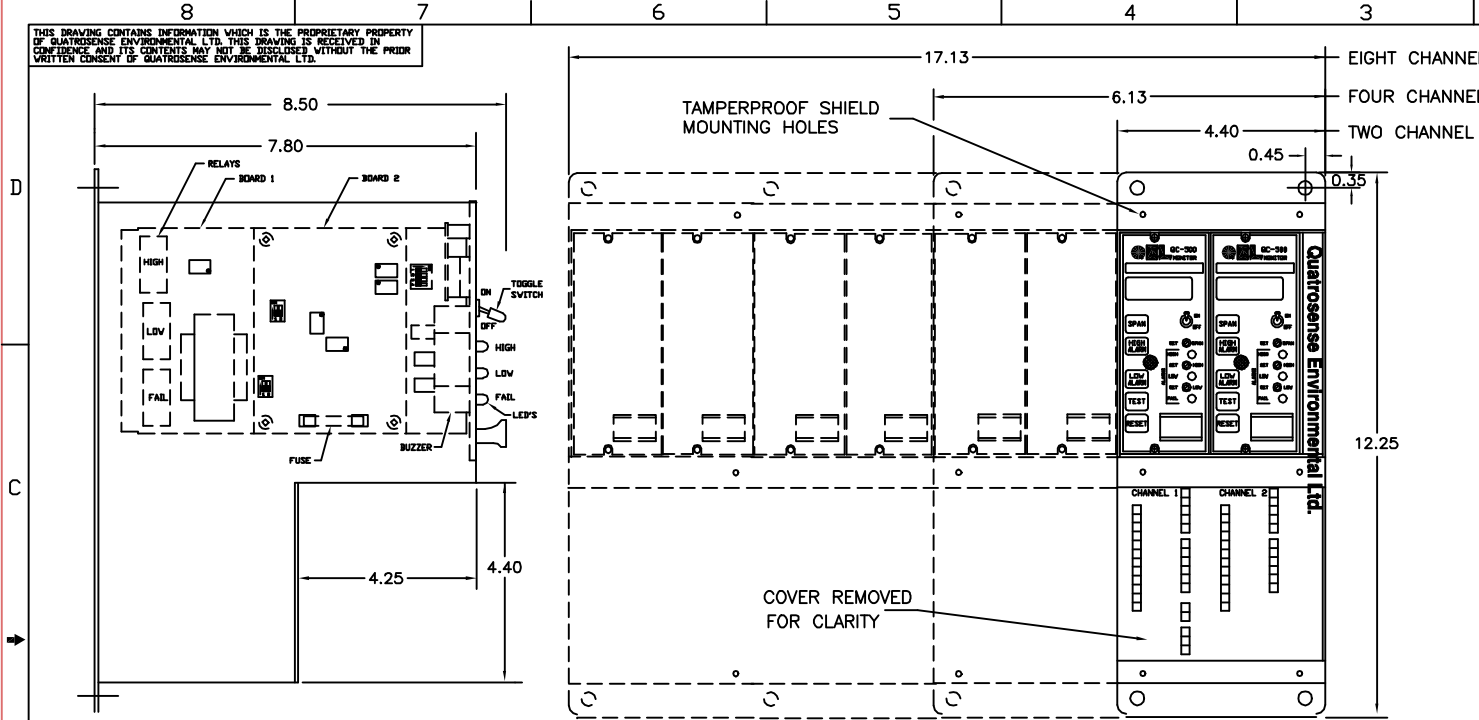


THIS DRAWING CONTAINS INFORMATION WHICH IS THE PROPRIETARY PROPERTY OF QUATROSENSE ENVIRONMENTAL LTD. THIS DRAWING IS RECEIVED IN CONFIDENCE AND ITS CONTENTS MAY NOT BE DISCLOSED WITHOUT THE PRIOR WRITTEN CONSENT OF QUATROSENSE ENVIRONMENTAL LTD.

| REVISIONS | | | | | | |
|-----------|-----|---------------------------|----------|-----|-----|------|
| REV | ECN | DESCRIPTION | DATE | DRN | CHK | APVD |
| A | --- | DWG No. SD-003 REVA | 87-10- | JMR | | |
| B | 075 | NEW RELEASE/NEW DOC. No. | 96-01-04 | HS | BC | RO |
| C | 084 | REV RELAY LOCATIONS/TITLE | 96-02-03 | HS | BC | RO |
| D | E14 | ADD RE-TRANSMISSION | 98-05-28 | YD | | |

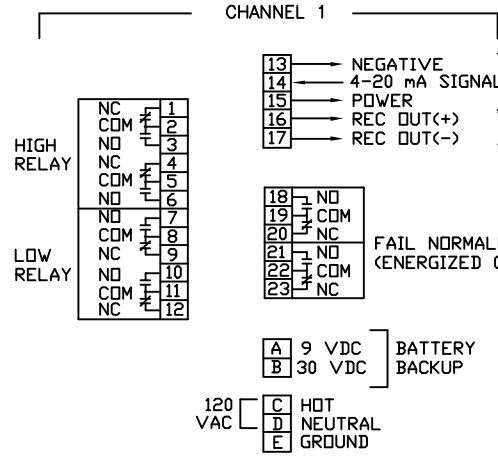


SPECIFICATIONS:

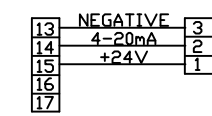
- POWER SUPPLY**
120 VAC, +10%-15% 50 to 60 Hz
5 VA per Module
- RELAYS**
240 VAC/30 VDC
5 Amps Res./3.7 Amps Ind.
- SENSOR**
4-20mA Remote Transmitter/Sensor
- ENVIRONMENT**
Temperature: -22°F to 122°F (-30°C to 50°C)
Humidity: 0 to 99 % Non-Condensing
- CABLE ENTRY**
1/2" Conduit entry holes supplied on bottom
- ENCLOSURE**
18 Gauge steel, Grey, NEMA 1
- WIRE**
Connection: Terminal blocks,
Size: Min. 24 AWG (Ø0.51 mm)
Max. 14 AWG (Ø1.6 mm)
- LISTING/APPROVALS**
CSA, C22.2 - No. 205,
UL recognized DPDT relays
- PANEL SIZE**
2 Channel: QCP-52000X-0000000
4 Channel: QCP-54000X-0000000
8 Channel: QCP-58000X-0000000

STANDARD SETTINGS

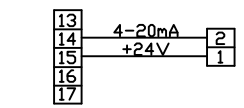
| Gas | Code | Range | Standard Calibration | |
|-------------|------|----------------|----------------------|----------|
| | | | Lo Alarm | Hi Alarm |
| H2S | 110 | 0 to 25 ppm | 5 | 10 |
| HCN | 115 | 0 to 12 ppm | 5 | 10 |
| C12 | 120 | 0 to 3 ppm | 0.5 | 2 |
| HC12 | 125 | 0 to 10 ppm | 5 | 7 |
| O2 | 130 | 0 to 25 % v/v | 19 % | 23 % |
| O2 | 131 | 0 to 25 % v/v | 19 % | 17 % |
| SO2 | 140 | 0 to 6 ppm | 2 | 5 |
| NO2 | 150 | 0 to 6 ppm | 1 | 3 |
| CO | 160 | 0 to 250 ppm | 50 | 100 |
| CO4 | 171 | 0 to 100 % LEL | 20 % LEL | 40 % LEL |
| NO | 190 | 0 to 100 ppm | 25 | 30 |
| CO2 | 200 | 0 to 2500 ppm | 500 | 1000 |
| H2 | 210 | 0 to 4 % v/v | 0.6 % | 1.6 % |
| H2 | 211 | 0 to 2000 ppm | 500 | 1000 |
| NH3 | 220 | 0 to 50 ppm | 25 | 35 |
| ETO | 230 | 0 to 3 ppm | 1 | 3 |
| O3 | 240 | 0 to 3 ppm | 0.05 | 2 |
| Freon R11 | 026 | 0 to 1000 ppm | 500 | 1000 |
| Freon R12 | 027 | 0 to 1000 ppm | 500 | 1000 |
| Freon R22 | 028 | 0 to 1000 ppm | 500 | 1000 |
| Freon R123 | 029 | 0 to 60 ppm | 30 | 50 |
| Freon R134A | 030 | 0 to 1000 ppm | 500 | 1000 |



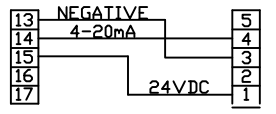
REMOTE SENSOR
4-20 mA RE-TRANSMISSION
OPTION
MODEL# QAS-51000X-T000000



WIRING EXAMPLE FOR QTS-1710XX REMOTE SENSOR



WIRING EXAMPLE FOR REMOTE 2 WIRE TOXIC SENSOR



WIRING EXAMPLE FOR QTS-18XXX REMOTE SENSOR

| | | |
|--|----------|--|
| DRN M. SRODIS | 95-12-14 | QUATROSENSE ENVIRONMENTAL LTD RICHMOND, ONTARIO, CANADA |
| CHK B. CURRIE | 95-12-21 | |
| DSGN | | MULTI-CHANNEL QC-500 SERIES QAS-51000X-0000000 |
| APVD | | |
| QA | | INSTALLATION: 4-20mA REMOTE SENSOR |
| APPLICATION | | |
| DIMENSIONS ARE IN INCHES. DIMENSIONS IN PARENTHESES ARE IN MILLIMETERS AND SHOWN FOR REFERENCE ONLY | | SIZE B |
| | | TYPE 1D |
| | | DWG NO 23050.001 |
| | | SCALE NONE |
| | | FILENAME: e35001.DWG |
| | | SHEET 1 OF 1 |