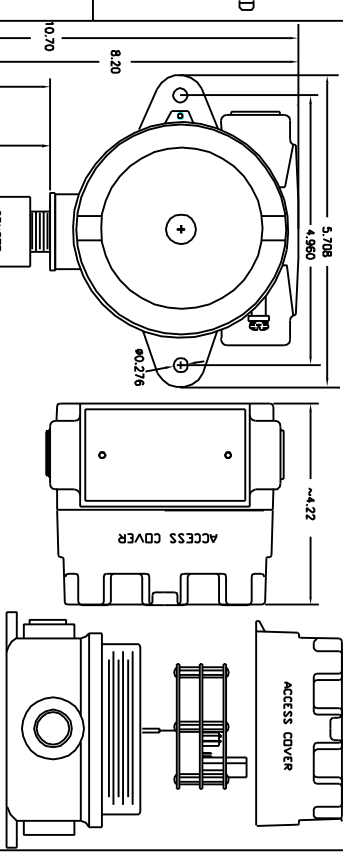
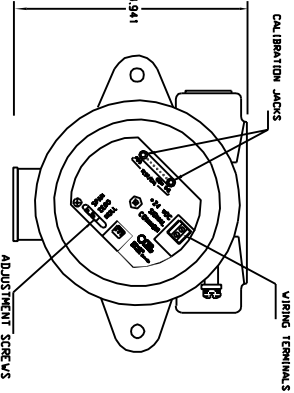
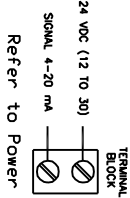


THIS DRAWING CONTAINS INFORMATION WHICH IS THE PROPRIETARY PROPERTY OF QUATROSENSE ENVIRONMENTAL LTD. THIS DRAWING IS RECEIVED IN CONFIDENCE AND ITS CONTENTS MAY NOT BE DISCLOSED WITHOUT THE PRIOR WRITTEN CONSENT OF QUATROSENSE ENVIRONMENTAL LTD.

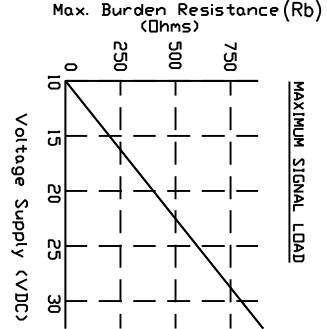
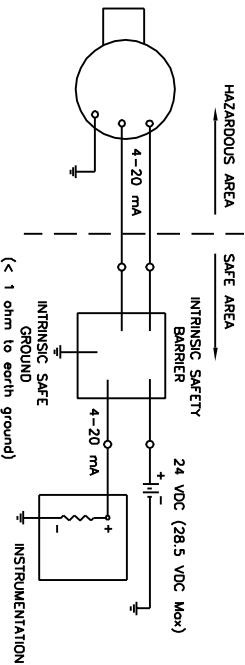


**WIRING CONNECTIONS**



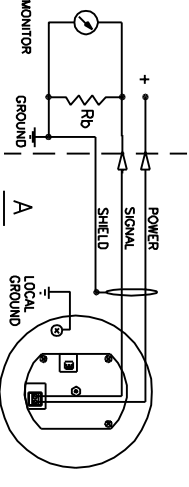
**HAZARDOUS LOCATIONS INSTALLATION FOR INTRINSICALLY SAFE OPERATION**

For intrinsically safe installation in Class A, B, C, and D hazardous areas when installed with CSA certified intrinsic safety barriers having parameters of 28.5 VDC maximum and 300 Ohms minimum.

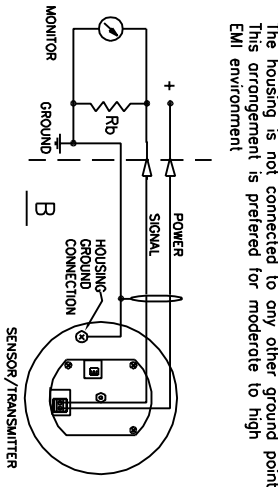


**POWER AND GROUND CONNECTIONS**

A: Transmitter housing connected to ground locally. Shield connected to monitor ground. This arrangement is suitable for low to moderate EMI environment.



B: Transmitter housing connected to cable shield which is connected to the monitor ground. The housing is not connected to any other ground point. This arrangement is preferred for moderate to high EMI environment.



REV	ECO	DESCRIPTION	DATE	DRN	CHK	APP'D
A	---	FIRST RELEASE	97-08-14	YD	BC	RO
B	783	Changed Enclosure to 20-1	06-09-18	FB		

**SPECIFICATIONS:**

- POWER SUPPLY: 24 VDC (12 to 36 VDC)
- SIGNAL OUTPUT: 4-20 mA Linear
- SENSOR: Electrochemical
- OPERATING RANGE (STANDARD): 0-25% v/v D<sub>2</sub>

**ENCLOSURE**

FM: CL.I, GR. A,B,C,C; CL.II, GR. E,F,G; CL.III; CSA: Class I, Groups A, Conduit seal is required 3/4" FNPT Conduit entry hole as shown.

**WIRE**

Connection: Terminal block, Size: Max. 14 AWG (0.15 mm)

**TRANSMITTER/SENSOR MOUNTING**

Sensor should be mounted horizontally or vertically with the sensor pointing downward.

**MOUNTING HEIGHT**

4 - 6 ft (1.2 to 1.8 m) above floor or as appropriate depending upon displacing gas.

**CALIBRATION RECOMMENDATION**

Every 90 days max.

**ENVIRONMENT**

Temperature: -20°C to +50°C (-4°F to +122°F)  
Humidity: 0 to 95% Non-Condensing

**PAINTING**

When painting in the area, seal sensor opening with masking tape.

DRN	T.DUBE	97-08-14	QUATROSENSE ENVIRONMENTAL LTD
CHK			RICHMOND, ONTARIO, CANADA
ISSN	P.V.D		OXYGEN TRANSMITTER/SENSOR
QA			OTS-1300
APPLICATION			EXPLOSION PROOF INSTALLATION
DIMENSIONS ARE IN INCHES	SIZE	TYPE	DWG NO.
DIMENSIONS IN PARENTHESES	ID	ID	78050-002-000
SCALE			SCALE