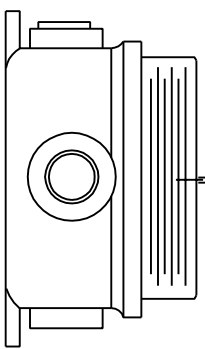
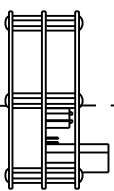
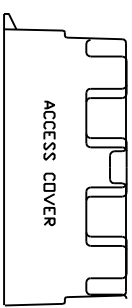
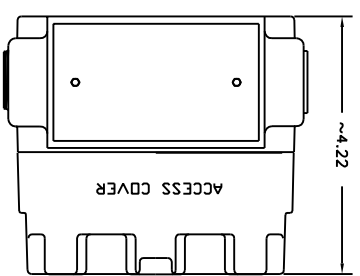
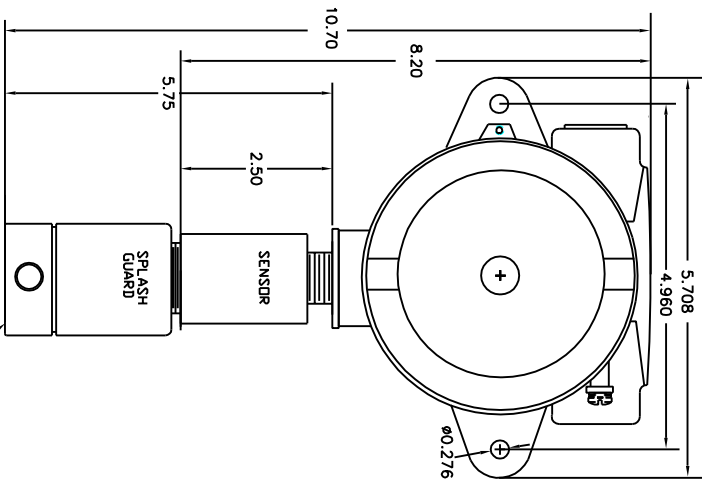


THIS DRAWING CONTAINS INFORMATION WHICH IS THE PROPRIETARY PROPERTY OF QUATROSENSE ENVIRONMENTAL LTD. CONFIDENCE AND ITS CONTENTS MAY NOT BE DISCLOSED WITHOUT THE PRIOR WRITTEN CONSENT OF QUATROSENSE ENVIRONMENTAL LTD.

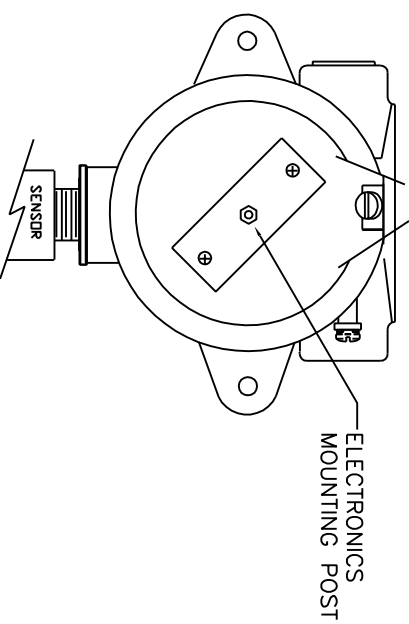
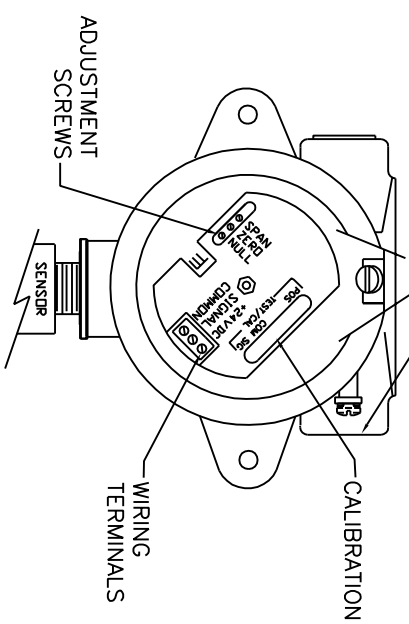


REMOVE ELECTRONICS MODULE
WHEN PULLING WIRES
OR CONNECTING GROUND WIRES
TO CASE GROUND
RECONNECT SENSOR
AS SOON AS POSSIBLE



SPLASH GUARD (OPTIONAL)

THREADED FOR
3/4" CONDUIT



REVOLUTIONS		DATE	DRN	CHK	APP'D
REV	ECD	DESCRIPTION			
A	770	FIRST RELEASE	06-04-26	XY	CDY
B	884	UPDATE TEMP SPEC	08-11-18	CLG	XYZ

DRN	XY	06-04-26	QUATROSENSE ENVIRONMENTAL LTD		
CHK	CDY	06-04-26	RICHMOND, ONTARIO, CANADA		
USON	XY	06-04-26	OTS-1710 SERIES		
APP'D			TRANSMITTER/SENSOR		
O.A.			COMBUSTIBLE GASES (XD-1)		
APPLICATION			INSTALLATION DRAWING		
DIMENSIONS ARE IN INCHES			SIZE	TYPE	DATE
DIMENSIONS ARE IN MILLIMETERS AND SHOWN FOR REFERENCE ONLY			B	ID	28050-411-000
			SCALE	FILENAME	SHEET 1 OF 2

THIS DRAWING CONTAINS INFORMATION WHICH IS THE PROPRIETARY PROPERTY OF QUATROSENSE ENVIRONMENTAL LTD. THIS DRAWING IS RECEIVED IN CONFIDENCE AND ITS CONTENTS MAY NOT BE DISCLOSED WITHOUT THE PRIOR WRITTEN CONSENT OF QUATROSENSE ENVIRONMENTAL LTD.

REVISIONS				
REV	ECO	DESCRIPTION	DATE	DRN
		SEE SHEET ONE		

SPECIFICATIONS:

POWER SUPPLY

24 VDC (12 to 30 VDC)
 125 mA maximum current draw
 80 mA typical

SIGNAL OUTPUT

4-20 mA Linear

MAX. SIGNAL LOAD

700 Ohms at 24 VDC
 500 Ohms at 20 VDC
 200 Ohms at 12 VDC

OPERATING RANGE (STANDARD)

0-100% LEL

SENSOR

Catalytic bead sensor
 Poison resistant standard

ENVIRONMENT

Temperature: -40°F to 122°F (-40°C to 50°C)
 Humidity: 0 to 99 % Non-Condensing

TRANSMITTER/SENSOR MOUNTING

Methane, Hydrogen and Ammonia:
 1ft (0.31 m) below ceiling.
 Other gases: 1 ft (0.31m) above floor
 Sensor should be mounted vertically with the sensor pointing downward

CABLE ENTRY

3/4" DIA Conduit entry hole as shown.

ENCLOSURE

Expl. Proof: CL I, Div 1, Gr. A, B, C, D
 FM, CSA, ATEX Approval

WIRE

Connection: Terminal block,
 Size: Min. 24 AWG (Ø0.51 mm)
 Size: Max. 14 AWG (Ø1.6 mm)

Relative Response to Flammable Gases

Gas	Lower Explosive Limit LEL	Response Relative to Methane	Methane Multiplier
Acetylene	1.5%	0.57	1.75
Benzene	1.2%	0.40	2.46
Cyclohexane	1.3%	0.45	2.22
Ethanol	3.3%	0.45	2.22
Hexane	1.0%	0.45	2.22
Hydrogene	2.2%	0.95	1.05
iso-Octane	0.95%	0.35	2.86
iso-Propyl Alcohol	2.2%	0.35	2.86
n-Butane	1.8%	0.55	1.82
n-Octane	1.0%	0.55	1.81
Nonane	0.85%	0.25	4.00
n-Propyl Alcohol	2.2%	0.40	2.50
Propane	2.1%	0.60	1.67

WIRING CONNECTIONS



CALIBRATION RECOMMENDATION

Every 90 days max.

STANDARD CALIBRATION

4-20 mA
 0-100% LEL CH4

PAINTING

When painting in the area, turn unit OFF, seal sensor opening with masking tape.

DRN	XY	06-04-26	QUATROSENSE ENVIRONMENTAL LTD		
CHK	CDV	06-04-26	RICHMOND, ONTARIO, CANADA		
DSGN	XY	06-24-26	OTS-1710 SERIES		
APP'D			TRANSMITTER/SENSOR		
QA			COMBUSTIBLE GASES (XD-1)		
			INSTALLATION DRAWING		
DIMENSIONS ARE IN INCHES			SIZE	TYPE	DRG NO.
DIMENSIONS IN PARENTHESES ARE IN MILLIMETERS AND SHOWN FOR REFERENCE ONLY			B	ID	28050-411-000
			SCALE	FILENAME	SHEET 2 OF 2