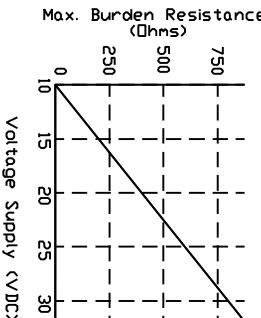
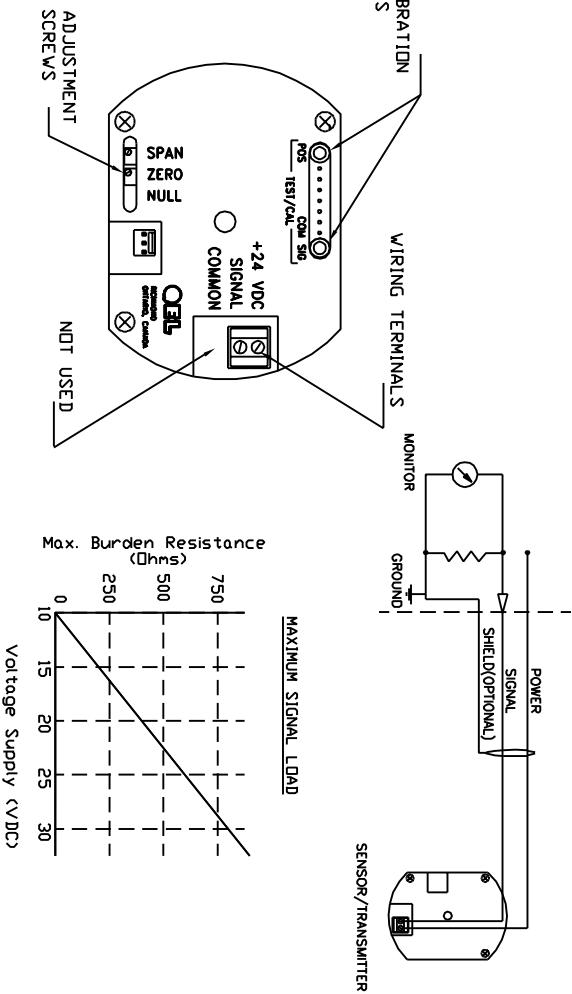
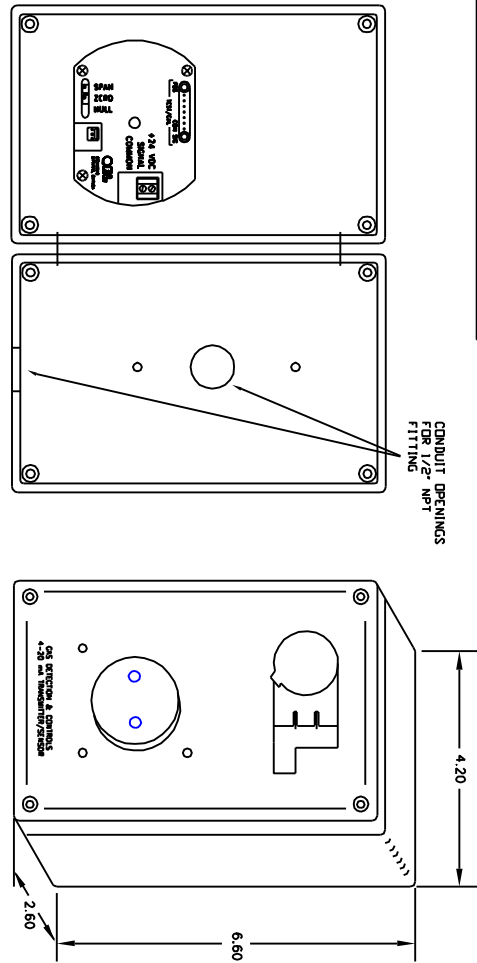


THIS DRAWING CONTAINS INFORMATION WHICH IS THE PROPRIETARY PROPERTY OF QUATROSENSE ENVIRONMENTAL LTD. THIS DRAWING IS RECEIVED BY THE PURCHASER UNDER A LICENSED AGREEMENT AND IS NOT TO BE REPRODUCED OR TRANSMITTED IN ANY FORM OR BY ANY MEANS, ELECTRONIC OR MECHANICAL, INCLUDING PHOTOCOPYING, RECORDING, OR BY ANY INFORMATION STORAGE AND RETRIEVAL SYSTEM, WITHOUT THE WRITTEN CONSENT OF QUATROSENSE ENVIRONMENTAL LTD.



**SPECIFICATIONS**

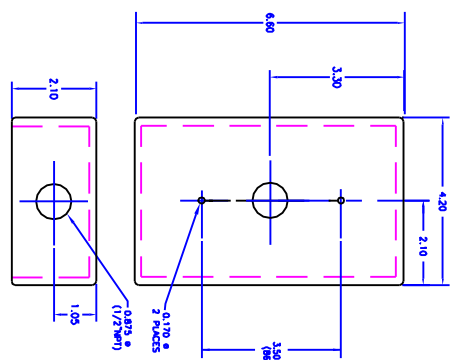
- POWER SUPPLY  
+24 VDC (Nominal)  
12-36 VDC
- SIGNAL OUTPUT  
4-20 mA
- SENSOR  
Electrochemical
- ENCLOSURE  
ABS Plastic Fire Retardant Cover,  
94 V-0  
1/2" Conduit entry holes supplied  
on top.
- ENVIRONMENT

**TRANSMITTER/SENSOR MOUNTING**

Flat surface mounting is designed to be installed on a standard single wall switch box,  
(2 holes 3/16" Dia. at 3-3/8" apart).  
WIRE  
Connection: Terminal block,  
Size: Min. 24 AWG (0.051 mm)  
Size: Max. 14 AWG (0.16 mm)  
CALIBRATION RECOMMENDATION  
Every 90 days max.  
PAINTING  
When painting in the area, protect sensor opening with masking tape.

MODEL #	GAS	MOUNTING	OPERATING TEMPERATURE
			MIN. °C (°F)   MAX. °C (°F)
OTS-61110	H2S	LOW	-40 (-40)   50 (122)
OTS-61115	H2N	MID	-20 (-4)   50 (122)
OTS-61120	CL2	LOW	-20 (-4)   50 (122)
OTS-61123	ClO2	LOW	-20 (-4)   50 (122)
OTS-61125	HCL	MID	-20 (-4)   50 (122)
OTS-61140	SO2	LOW	-20 (-4)   50 (122)
OTS-61150	NO2	LOW	-20 (-4)   50 (122)
OTS-61160	CO	MID	-20 (-4)   50 (122)
OTS-61190	NO	MID	-20 (-4)   50 (122)
OTS-61211	H2	HIGH	-20 (-4)   50 (122)
OTS-61220	NH3	HIGH	-25 (-13)   30 (86)
OTS-61230	C2H4O	LOW	-20 (-4)   50 (122)
OTS-61240	O3	MID	-20 (-4)   50 (122)

**HUMIDITY:**  
0 to 99 % Non Condensing Intermittent  
0 to 90 % Non Condensing Continuous  
\* LDW = 9 - 18" (0.23 to 0.46 m) above floor.  
HIGH = 9 to 18" (0.23 to 0.46 m) below ceiling.  
MID = 4 to 6 ft (1.2 to 1.8 m) above floor.



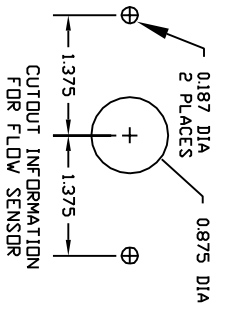
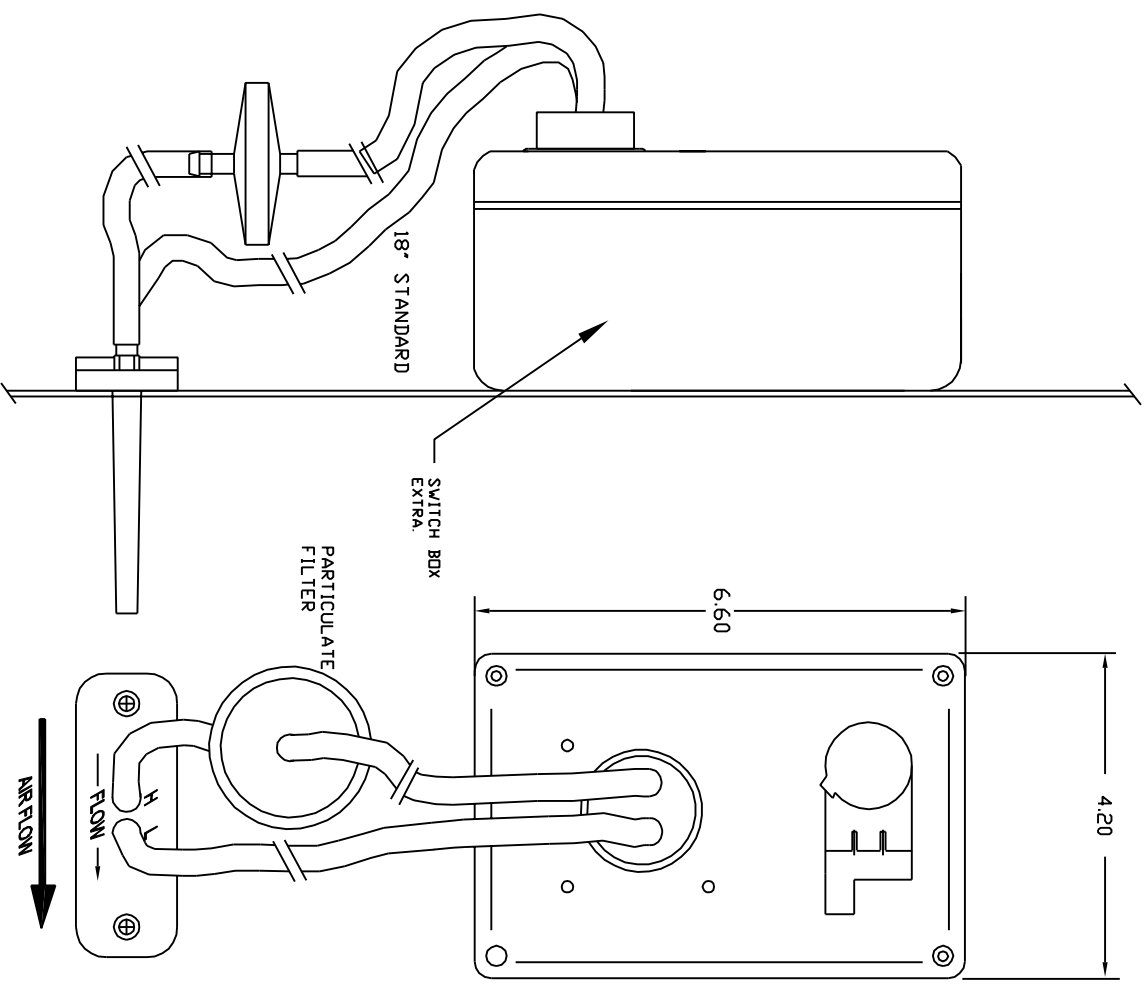
REV	DATE	DESCRIPTION	BY	CHK
1	97-05-09	INITIAL RELEASE	10	BC
2	99-03-26	ADD ETD	10	BC
3	05-05-08	CLG CLG	10	BC
4	05-06-21	REV	10	BC

QUATROSENSE ENVIRONMENTAL LTD.  
RICHMOND, ONTARIO, CANADA

ANALOG TRANSMITTER/SENSOR  
OTS-6000 SERIES  
DUCT MOUNT INSTALLATION

SIZE: B  
TYPE: ID  
DWG NO: 71050-007-000  
SCALE: ---  
FILENAME: 71007B06  
SHEET 1 OF 2

REVISIONS				
REV	ECO	DESCRIPTION	DATE	DRN
ALL	---	SEE SHEET ONE		APV/D



NOTE: GAS SAMPLING OCCURS WHEN AIR FLOW ACROSS THE TWO TUBES CAUSES DIFFERENTIAL PRESSURE. THIS METHOD WILL NOT WORK IN STATIC AIR SAMPLING.

DRN	Y. DOUBE	00-12-13	QUATROSENSE ENVIRONMENTAL LTD
CHK			RICHMOND, ONTARIO, CANADA
DISC	Y. DOUBE	00-12-13	
APV/D			
QA			
APPLICATION			
ANALOG TRANSMITTER/SENSOR			
QTS-6000 SERIES			
DUCT MOUNT INSTALLATION			
SIZE	B	DWG NO	71050-007-000
TYPE	ID	REV	D
FINISH	---	SCALE	---
FILE		SHEET 2	OF 2

4 3 2 1

A B C D

4 3 2 1

DUCT MOUNTING OPTION

18" STANDARD

SWITCH BOX EXTRA

PARTICULATE FILTER

4.20

6.60

AIR FLOW

0.187 DIA  
2 PLACES

0.875 DIA

1.375

1.375

CUTOUT INFORMATION FOR FLOW SENSOR

NOTE: GAS SAMPLING OCCURS WHEN AIR FLOW ACROSS THE TWO TUBES CAUSES DIFFERENTIAL PRESSURE. THIS METHOD WILL NOT WORK IN STATIC AIR SAMPLING.

DRN Y. DOUBE 00-12-13 QUATROSENSE ENVIRONMENTAL LTD RICHMOND, ONTARIO, CANADA

CHK

DISC Y. DOUBE 00-12-13

APV/D

QA

APPLICATION

ANALOG TRANSMITTER/SENSOR QTS-6000 SERIES DUCT MOUNT INSTALLATION

SIZE B TYPE ID DWG NO 71050-007-000 REV D

FINISH --- SCALE --- FILE

SHEET 2 OF 2