

SPECS:

POWER SUPPLY

24 VAC or 24 VDC (Nominal)
 Less than 100 milliamperes operating
 Allow 250 milliamperes turn-on surge
 Range: DC: 15 to 40 VDC
 AC: 12 to 28 VAC

SIGNAL OUTPUT

4-20 mA linear : Max Impedance 750 Ohms
 OR
 2-10 VDC linear : Min Impedance 100,000 Ohms
OPERATING RANGE
 2500 ppm Default
 Adjustable 2000 - 5000 ppm CO2

SENSOR

Single-Beam Non-Dispersive Infra-Red
ENVIRONMENT
 Temperature: 40°F to 104°F (5°C to 40°C)
 Humidity: 0 to 99 % Non-Condensing

SENSOR/TRANSMITTER MOUNTING

Wall Mounting :
 Mount holes fit standard Switch Box
CABLE ENTRY
 From back of enclosure 94 V-0

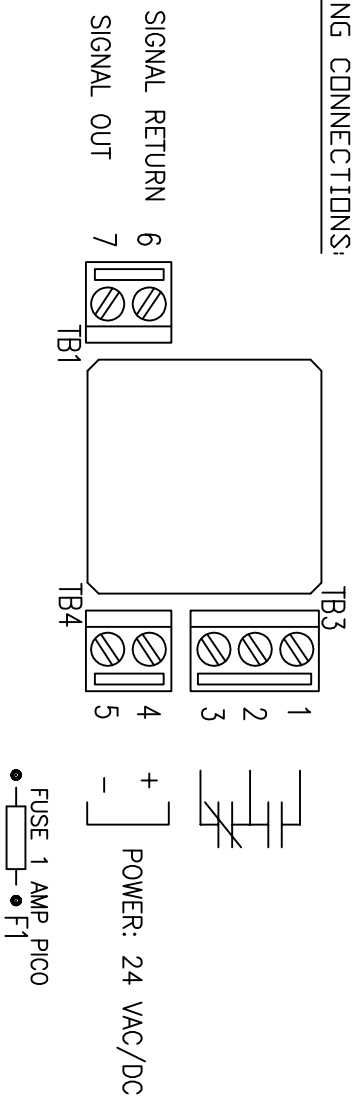
ENCLOSURE

ABS Plastic Fire Retardant
 Colour: Pantone - Cool Grey 2U

WIRE

Connectors: Terminal blocks,
 screw type for lead wire,
 Size: Min. 26 AWG (0.40mm)
 Max. 16 AWG (1.3 mm)

WIRING CONNECTIONS:



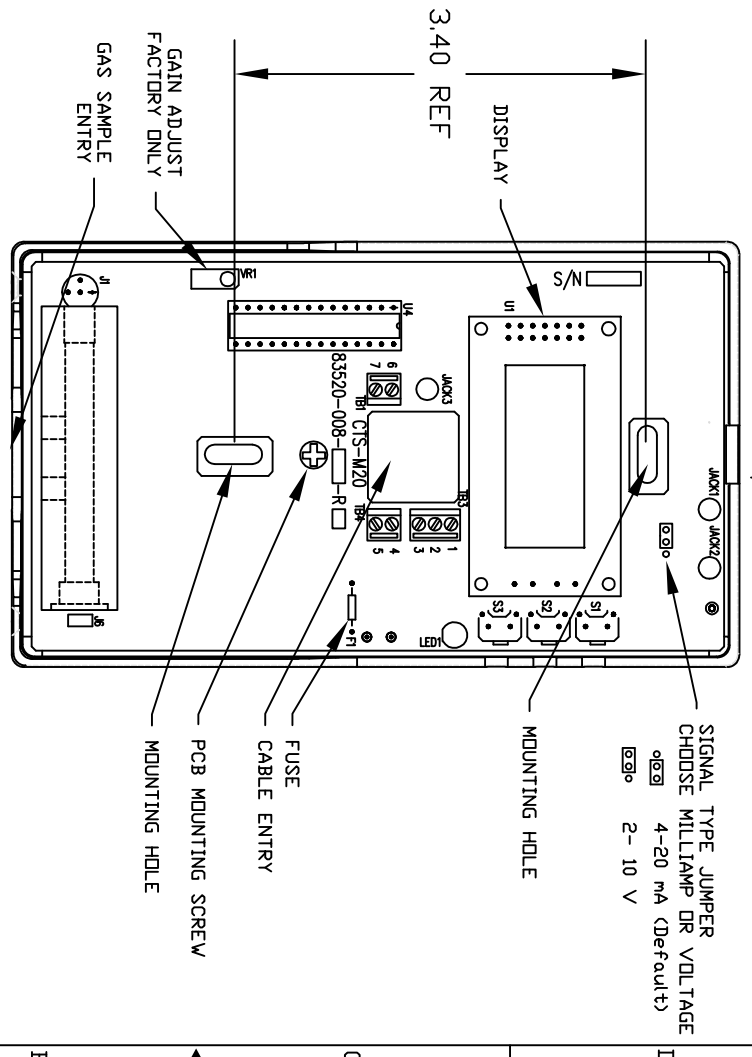
3-WIRE INSTALLATIONS:

Where Signal Return may be equivalent to Power Negative or Ground, then a jumper wire must be supplied between Power Negative and Signal Return (Terminals 5 and 6). This may be done with 24VDC systems and AC systems grounded one side.

| REVISIONS | | | | | | | | | | |
|-----------|------|----------------------------|------------|-----|-------|-------|-----|------|-----|-----|
| REV | ECO | DESCRIPTION | DATE | DRN | CHK | APP'D | REV | DATE | DRN | CHK |
| A | --- | FIRST RELEASE | 01-07-20 | YD | BC | BC | BC | | | |
| B | 462 | UPDATE SIGNAL OUTPUT MNT | 01-09-20 | YD | BC | BC | BC | | | |
| C | 748 | UPDATE J3 DEFAULT | 05-09-27 | YD | DH | DH | DH | | | |
| D | 839 | Default 4-20mA / 0-2500ppm | 2008-01-03 | XY | Chady | XY | XY | | | |
| E | 1029 | CHANGE 24" TO 34" | 13-08-06 | XY | XY | XY | XY | | | |

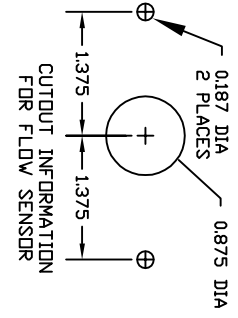
| | | |
|---------------|----------|----------------------------------|
| DRN Y. VALUE | 00-12-13 | QUATROSENSE ENVIRONMENTAL LTD |
| CHK | 00-12-13 | RICHMOND, ONTARIO, CANADA |
| DSGN Y. VALUE | 00-12-13 | |
| APP'VD | | |
| QA | | |
| APPLICATION | | |
| SIZE | TYPE | DWG NO |
| B | 1D | 83550-001-000 |
| SCALE | FILE | 83550-001-000-RWDWG SHEET 1 OF 2 |
| FINISH | | |

| REVISIONS | | | |
|-----------|-----|---------------|------|
| REV | ECO | DESCRIPTION | DATE |
| E | --- | SEE SHEET ONE | --- |

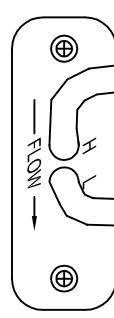
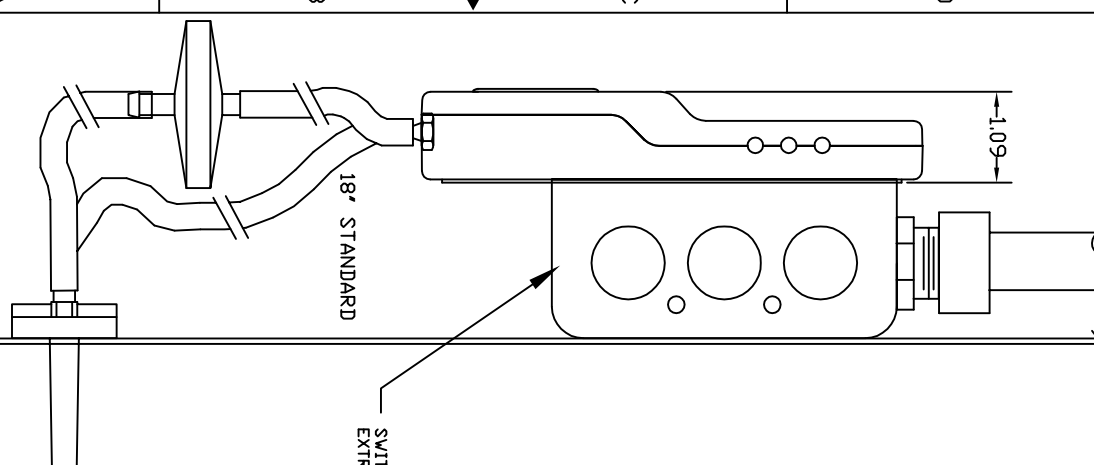
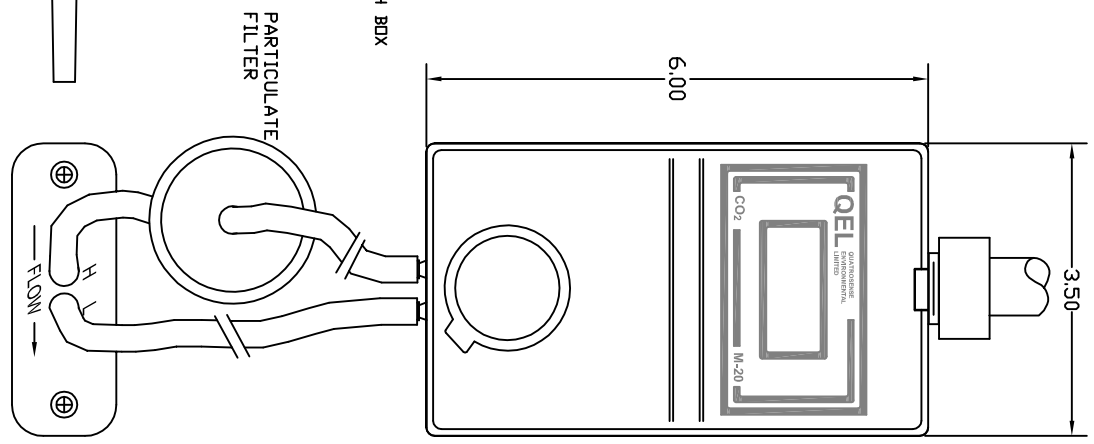


SIGNAL MONITORING METER PROBE JACKS

- Jack1 4-20 mA signal output only
- Jack2 2-10 V signal output OR 4-20 mA negative (does not interrupt signal).
- Jack3 Signal Common (interrupts 4-20 mA output)



NOTE: GAS SAMPLING OCCURS WHEN AIR FLOW ACROSS THE TWO TUBES CAUSES DIFFERENTIAL PRESSURE. THIS METHOD WILL NOT WORK IN STATIC AIR SAMPLING.



SWITCH BOX EXTRA

DUCT MOUNTING OPTION

| | | |
|-------------|----------|--|
| DRN Y.00BE | 00-12-13 | QUATROSENSE ENVIRONMENTAL LTD RICHMOND, ONTARIO, CANADA |
| CHK | | |
| DSGN Y.00BE | 00-12-13 | |
| APP'VD | | |
| QA | | M-20 |
| APPLICATION | | INSTALLATION DRAWING |
| SIZE | TYPE | DWG NO |
| B | ID | 83550-001-000 |
| SCALE | FILE | 83550-001-000-RELEASING SHEET 2 OF 2 |

DUCT ADAPTER

4

3

2

1